



Easy Save Plus Energy Efficiency Program

Paul Geary

ESP Prescriptive Measures

- Air Conditioners and Heat pumps
- Programmable T-stats
- Chillers
- Lighting – Delamping, Occ. Sensors, Exit signs, CFL
 - T12 to Standard T8 retro no longer eligible.
- HID retrofit with Fluorescent
- Variable Speed Air Compressors
- Motors
- VSD's (VFD's)
- Refrigeration – ASH, ECM (evaporator fan motor)



New ESP Prescriptive Measures

- T12 retrofit to Premium T8 (standard T8 not eligible)
- LED Interior Lights (similar to Easy Save)
- Induction Lighting
- LED Traffic Lights
- Refrigeration LED Strip Lighting
- Advanced Power Strips
- Computer Power Monitoring
- CO and CO2 Sensors
- Efficient Compressors/Condensers
- Floating Head Pressure Controls
- Refrigerated Display Auto Door Closers
- Green Motor Rewind
- Heat Pump Water Heaters
- Hotel Room HVAC control (occupancy)
- HVAC System Test and Repair
- Shade Screens



ESP Custom Retrofit Measures

- Custom Lighting
 - Fluorescent to LED
 - Exterior LED of any type
- Energy Management Systems
- Plate and Frame H/X
- High Efficiency Fans for Air Handlers
- Process improvements (typically industrial)
- Rebate \$0.10/kWh capped at 75% of incremental cost. Must pass cost effectiveness test.



New Construction Program

- Whole Building (rebate capped at \$75,000)
 - Energy Model required.
 - ASHRAE 90.1 Baseline
 - Incentive paid at \$0.10/kWh annual savings versus baseline.
- Lighting Power Density
 - Lighting Comcheck analysis (or similar) required.
 - ASHRAE 90.1 Baseline
 - Incentive paid at \$0.10/kWh annual savings versus baseline.



New TEP Program (Pilot)

- RetroCommissioning (RCx) - Study
 - Study – paid in 2 installments
 - Tier 1 – Annual site consumption 400,000 to 750,000 kWh – study incentive up to \$2,500
 - Tier 2 – Annual site consumption over 750,000 kWh and existing DDC system – study incentive up to \$10,000

Available Incentives

Description	Level	Incentive
Complete Retro-Commissioning Building Optimization Tool Study	Tier 1	\$1250
Install Low and No Cost Measures	Tier 1	\$1250
Complete Full Retro-Commissioning Study	Tier 2	\$5000
Install Low and No Cost Measures	Tier 2	\$5000



New TEP Program (Pilot)

- RetroCommissioning (RCx) - Installation
 - Low and no-cost measures completed and full Study incentives received
 - Non Retrofit Measures that exceed no and low cost measures measure requirement of \$1250 (Tier 1) and \$5000 (Tier 2) as part of Study phase.
 - Incentive paid at \$0.07 kWh annual savings up to 100% of incremental cost (in-house labor not included).



Prescriptive Lighting – T12 to Premium T8

- Consortium for Energy Efficiency (CEE) listed or demonstrate that product meets specs
- Standard T8 not eligible anymore – can't just buy any T8/ballast from store shelves without doing your homework.
- Savings of 30% (or more)
- Rebate of \$6/lamp

- Key parameters – Mean Lumens per Watt, Lumen Maintenance/life



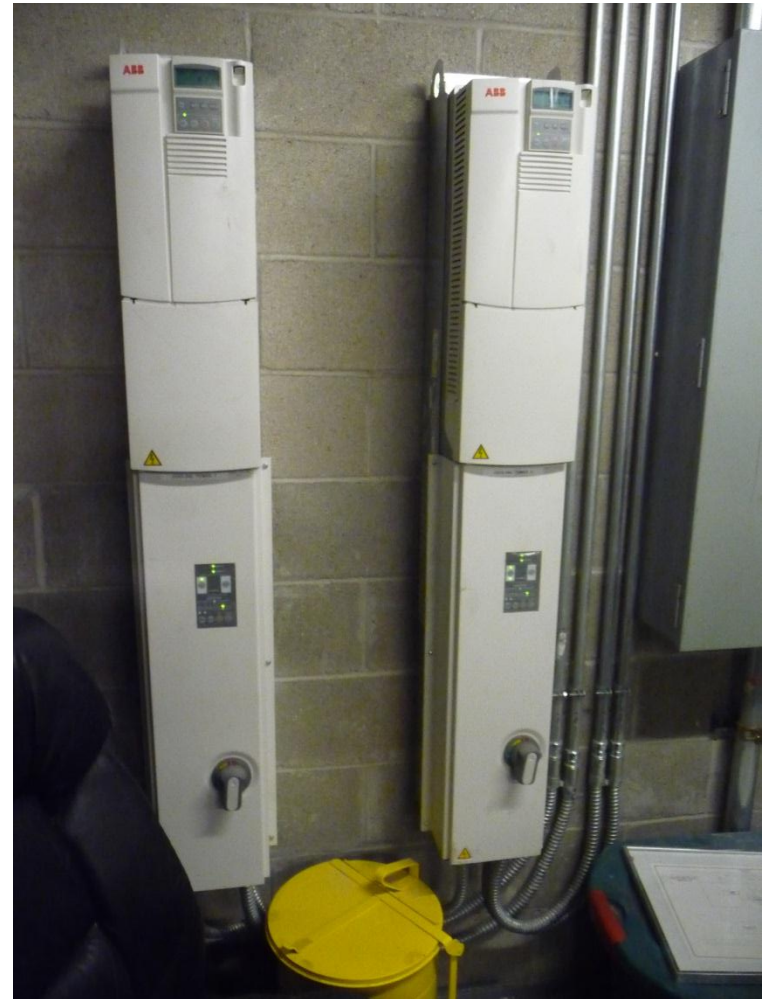
Prescriptive Lighting – Incand. to LED

- Interior Only – replacing incandescent lighting up to 100W - \$10, over 100W - \$20
- Savings up to 80%
- Must be listed on Energy Star or DLC (Design Lights Consortium) qualified product list
- All other LED lighting retrofit is still custom (except for traffic lights)



Common VFD Applications

- Fan systems
- Chillers
- Pumps
- Refrigeration motors
- Air compressors



Prescriptive – Advanced Power Strips

- Plug-load smart strips
- Control electrical equipment in offices and cubicles
- 3 types
 - Occupancy Sensor
 - Load controlled (reduce “vampire loads”)
 - Timer controlled
- Rebate is \$10/strip



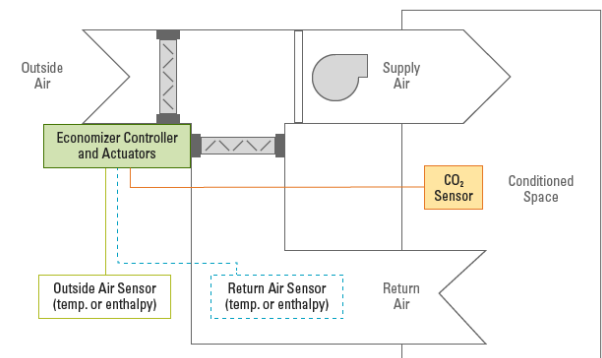
Prescriptive – Computer Power Management

- Software solution - allows PC's to be put into low power settings during appropriate hours
- Software must have the following capabilities
 - Automatically control power settings of networked PC's at the server level
 - Manage power consumption of each individual PC
 - Reporting - # of PC's controlled with individual identifier and energy savings results
 - Individual PC's eligible for one incentive every 6 years
- Rebate is \$8/Seat or computer



Prescriptive – CO and CO2 Sensors

- Carbon Monoxide (CO) – Parking Garage application
 - Control fan motor on/off or VSD speed
 - Typical sensor coverage is 7,000 to 10,000 SF
 - CO levels shall comply with applicable codes
 - Rebate \$250 each
- Carbon Dioxide (CO2) – Reduce conditioning of OSA
 - Must control ventilation system.
 - Must be installed in conjunction with controls governed OSA damper
 - CO2 levels shall comply with applicable codes
 - Excludes outside air CO2 reference sensor
 - Rebate \$200 each



Prescriptive – Efficient Comp/Cond

- Refrigeration Measure
- Efficient Compressor
 - Required compressor COP depends on type of service
 - Rebate \$80/ton
- Efficient Condenser
 - Rebate \$20 ton



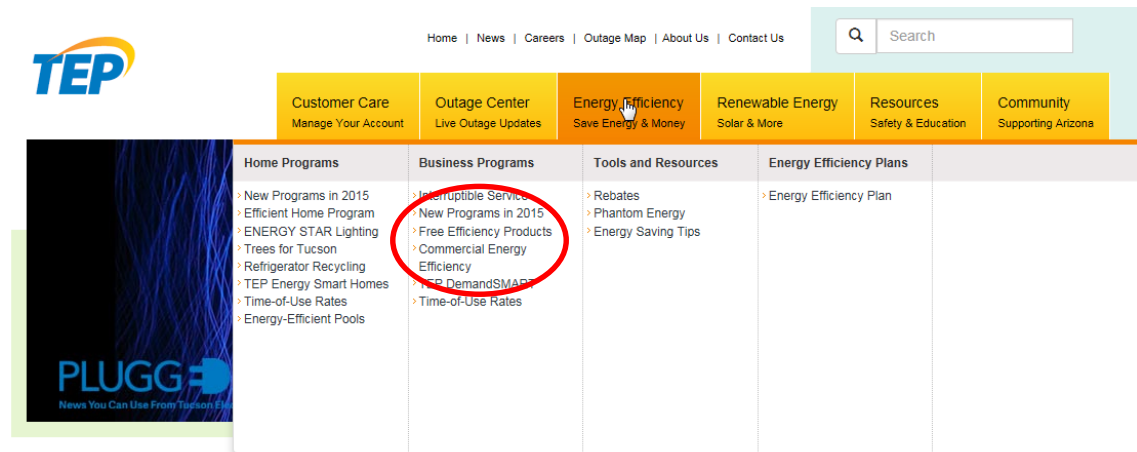
Prescriptive – HVAC Test and Repair

- DX Unit HVAC Measure (typically rooftop package – 4 tons and up)
 - Advanced Diagnostic Tune-up \$240/unit
 - Economizer Repair – \$75/unit
 - Duct Test and Repair - \$225/unit plus \$15/ton
- List of approved HVAC contractors for service to be available on website soon.





TEP Rebate Programs

- Navigate to TEP.com




I would like to...

 **Pay My Bill**
Credit Card | Paperless Billing | Payment Options

 **Manage My Services**
Start, Stop or Transfer My Service | Log In | Apply for New Construction

 **Learn About TEP**
Employment | About Us | Sustainability | Community | Contact Us | Plugged In Newsletter

 **Save Energy, Save Money**
Home Programs | Business Programs | Solar Programs | Energy Tips | Rebates

Log In to Account Manager

[Forgot Your Password?](#)



Contact info: General Questions 1-866-324-5506
David Kasper: david.kasper@dnvgl.com, 520-396-0681
Paul Geary: paul.geary@dnvgl.com, 520-918-8382